



AUS

CAN

GB

IRL

NZ

USA

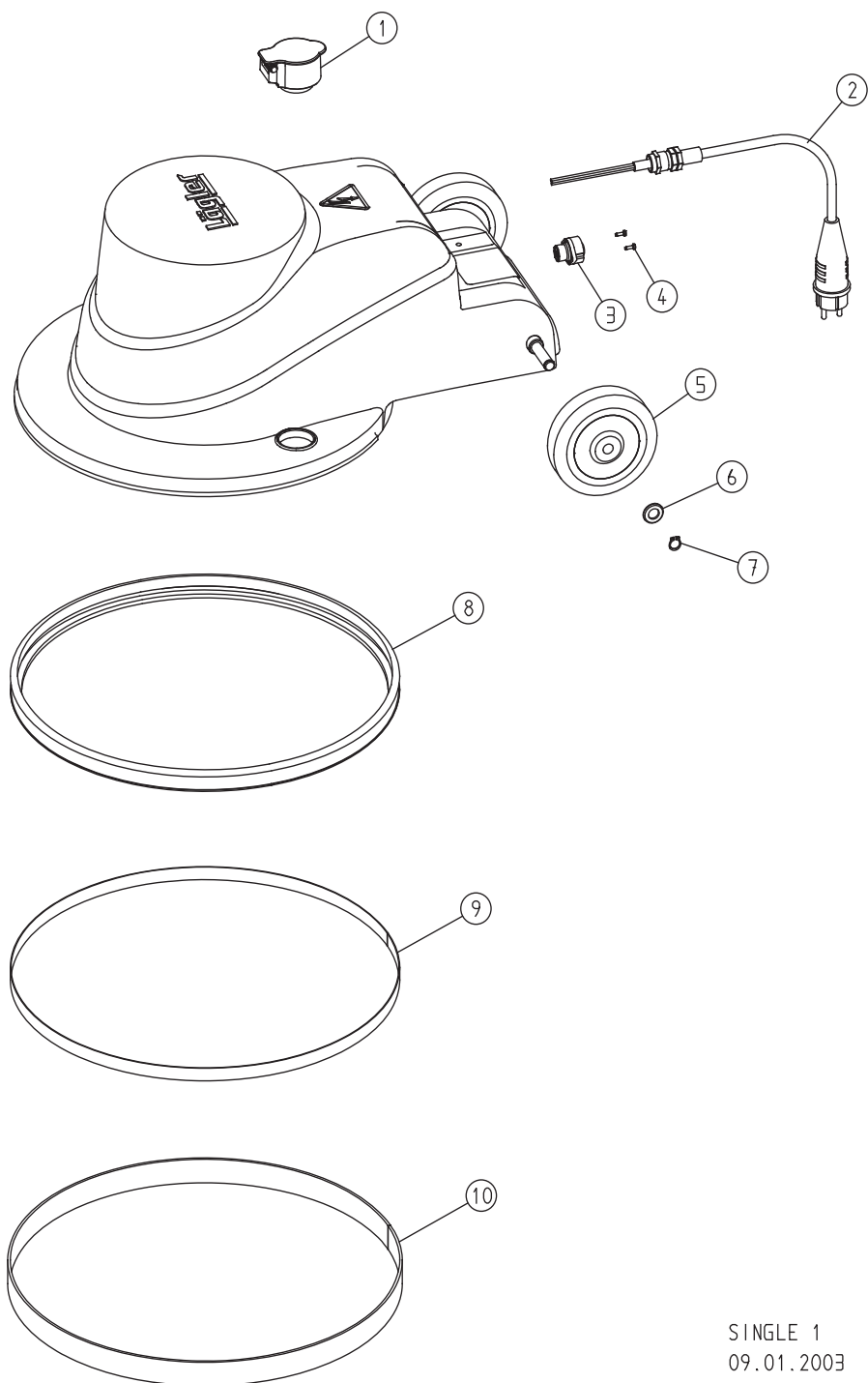
Spare Parts

for the single-disc sanding machine

SINGLE

Lägler®

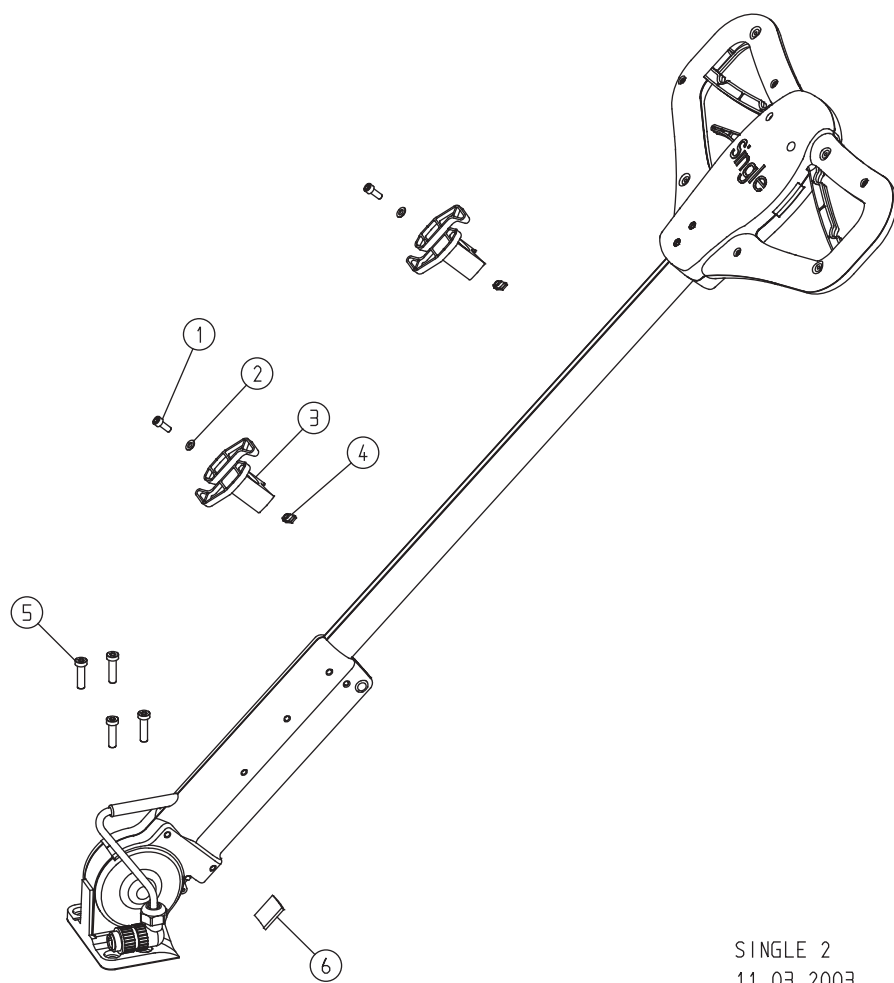
WORLD LEADERS IN FLOOR
SANDING TECHNOLOGY



SINGLE 1
09.01.2003

SPARE PARTS

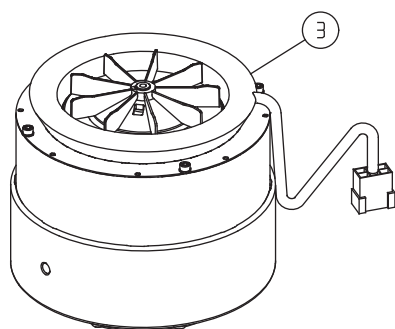
Item	Part no.	Description
1	850.01.80.200	Dust extraction socket
2	000.65.43.252	Motor cable 3 x 2.5 mm ²
3	000.65.71.040	Integrated socket
4	7500.1003.010	Lens head screw
5	850.05.09.105	Wheel
6	0125.1012.000	Washer
7	0471.0012.000	Circlip
8	850.01.02.105	Buffer
9	850.01.40.100	Velcro
10	850.01.51.100	Fluffy sealing strip



SINGLE 2
11.03.2003

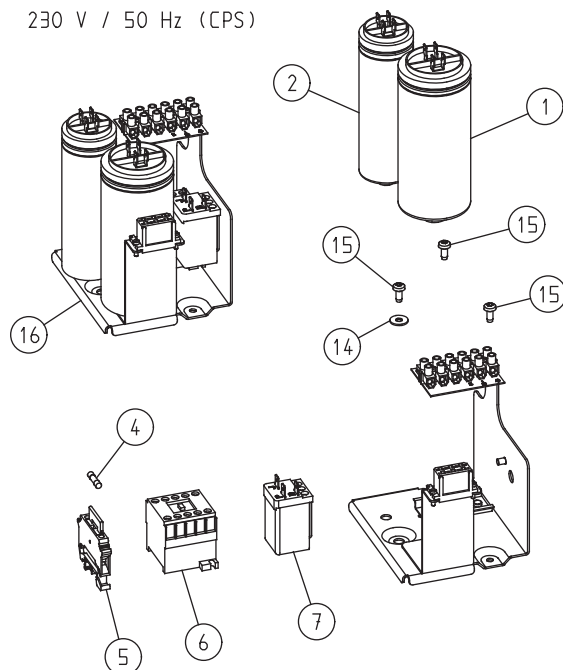
SPARE PARTS

Item	Part no.	Description
1	0912.1006.016	Hexagonal socket head screw
2	0125.1006.000	Washer
3	850.20.28.105	Cable holder
4	850.20.29.100	Sliding block
5	7984.1008.030	Hexagonal socket head screw
6	900.70.25.105	Bumper felt

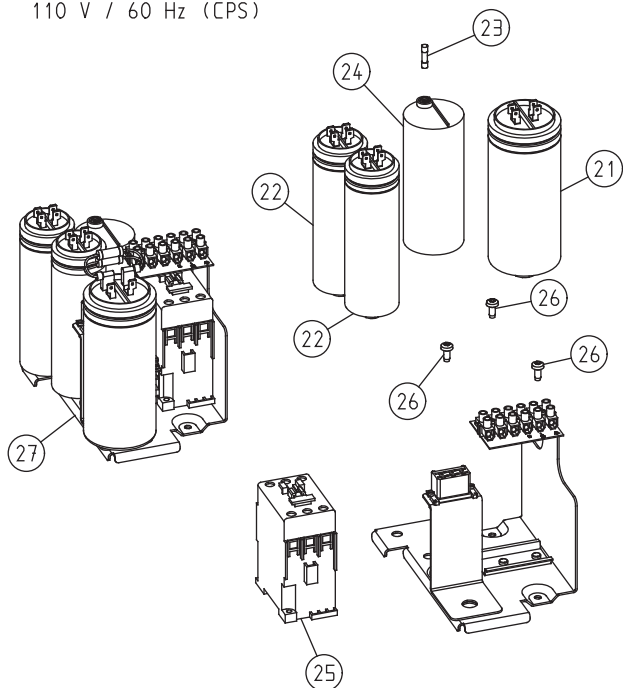


SINGLE 3
01.07.2007

230 V / 50 Hz (CPS)



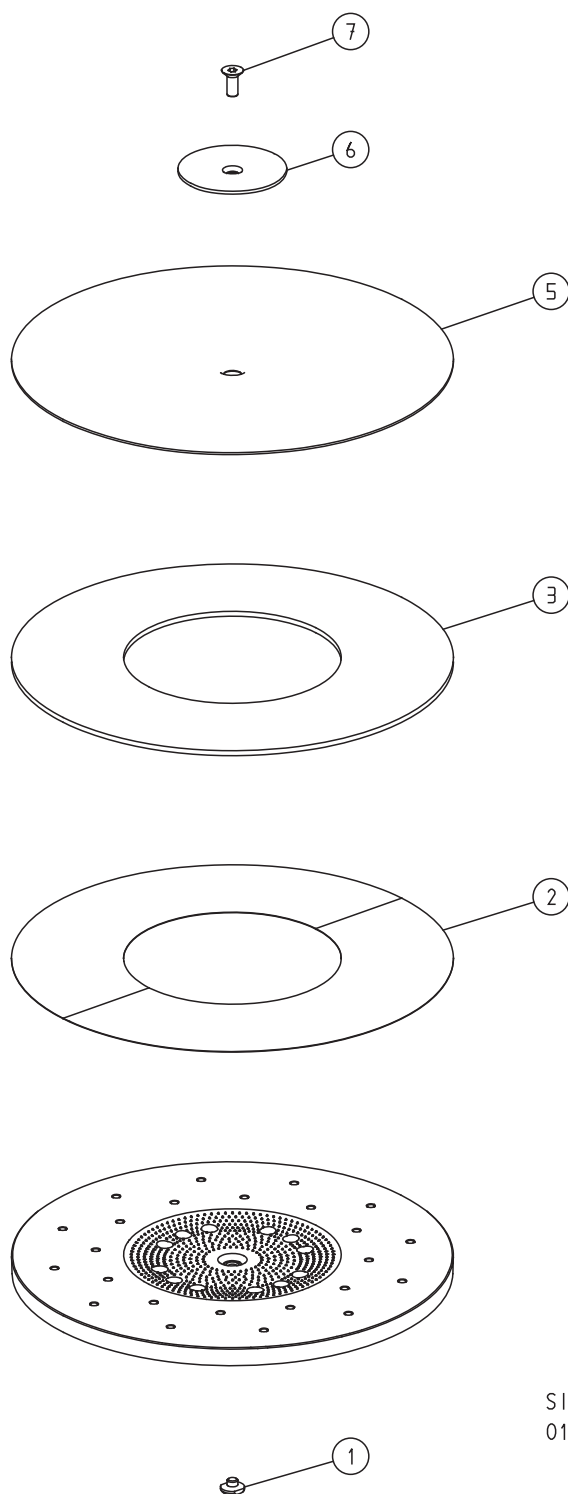
110 V / 60 Hz (CPS)



SPARE PARTS

Item	Part no.	Description
1	000.65.10.041	Capacitor 40 μ F
2	000.65.10.061	Capacitor 60 μ F
3	850.65.00.200	Motor new, 230 V / 50 CPS / 1.2 KW
	852.65.00.100	Motor new, 110 V / 60 CPS / 1.2 KW, USA
4	000.65.80.061	Fuse
5	000.65.82.010	Fuse holder
6	000.65.20.010	Universal contactor
7	000.65.20.230	Relay
8	850.64.06.100	Adapter mounting
9	850.64.07.205	Shock absorber
10	850.64.08.100	Plate mounting
11	1481.0006.032	Spring type straight pin
12	6797.1008.000	Toothed lock washer
13	7984.1008.030	Hexagonal socket head screw
14	9021.1005.000	Washer
15	7500.1005.012	Lens head screw
16	850.65.80.100	Control electric system compl., 230 V / 50 Hz
21	000.65.10.131	Capacitor 130 μ F
22	000.65.10.061	Capacitor 60 μ F
23	000.65.80.021	Fuse
24	852.65.30.100	Starting electronics
25	000.65.20.050	Universal contactor USA
26	7500.1005.012	Lens head screw
27	852.65.80.200	Control electric system compl., 110 V / 60 Hz, USA

SPARE PARTS

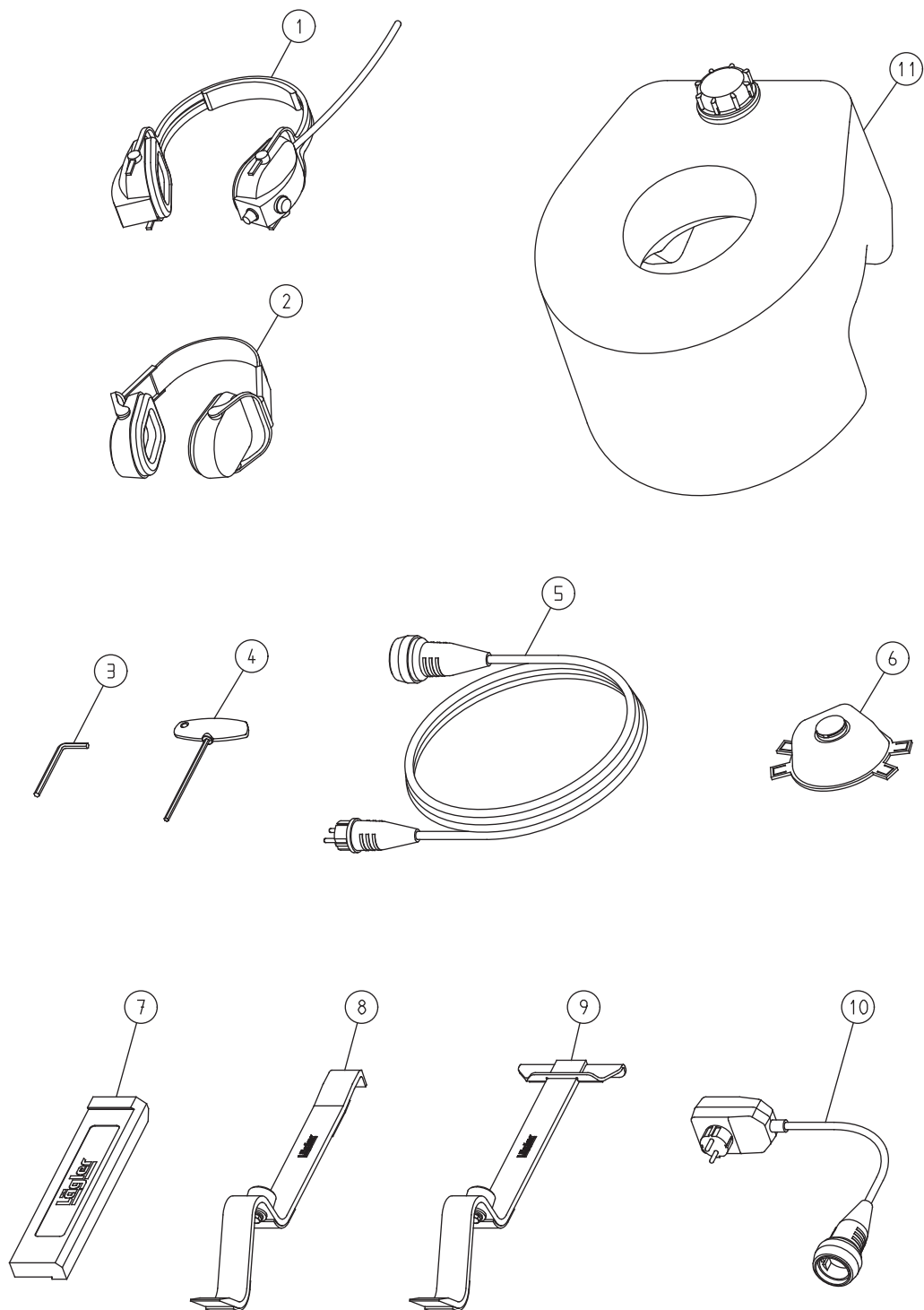


SINGLE 4
01.05.2004

SPARE PARTS

Item	Part no.	Description
	850.02.10.100	Sanding plate SINGLE, complete
1	850.02.06.200	Centering dome
2	850.02.12.105	Velcro for pad and velcro sanding disc (two parts necessary)
3	850.02.13.105	Flexible ring with velcro
5	9.012.413.080	Double sanding disc 406 mm, grain size 80
6	850.02.05.100	Paper tensioning disc
7	7991.1010.725	Countersunk screw, left-handed thread

SPARE PARTS



SINGLE 5
01.07.2007

SPARE PARTS

Item	Part no.	Description
1	000.01.10.011	Foldable earmuff type MUSIMUFF
2	000.01.10.021	Foldable earmuff type POCKET
3	000.93.11.061	Hexagonal socket screw wrench 6 mm
4	000.93.12.052	Hexagonal socket screw wrench 5 x 150 mm
5	000.65.53.251	Extension cable 3 x 2.5 mm ² , 10 m long
6	000.01.20.010	Protective mask P3
7	701.10.00.100	Impact tool
8	702.00.00.200	Parquet layer tool ZUGEISEN with small angle-bracket
9	703.00.00.200	Parquet layer tool ZUGEISEN with broad angle-bracket
10	000.01.65.010	DI-safety plug
11	850.80.10.105	Additional weight SINGLE